



**REGIONAL SPECIALISED METEOROLOGICAL CENTRE-TROPICAL CYCLONES, NEW DELHI  
TROPICAL WEATHER OUTLOOK**

**DEMS-RSMC SPECIAL TROPICAL CYCLONES NEW DELHI DATED 15.11.2022**

**TROPICAL WEATHER OUTLOOK FOR NORTH INDIAN OCEAN (THE BAY OF BENGAL AND THE ARABIAN SEA) VALID FOR NEXT 120 HOURS ISSUED AT 0600 UTC OF 15.11.2022 BASED ON 0300 UTC OF 15.11.2022.**

**BAY OF BENGAL:**

A CYCLONIC CIRCULATION DEVELOPED OVER SOUTH ANDAMAN SEA AND ADJOINING SOUTHEAST BAY OF BENGAL AT 0000 UTC AND PERSISTED OVER THE SAME REGION AT 0300 UTC OF TODAY, THE 15TH NOVEMBER, 2022. UNDER ITS INFLUENCE, A LOW PRESSURE AREA IS LIKELY TO FORM OVER SOUTHEAST BAY OF BENGAL & ADJOINING ANDAMAN SEA ON 16TH NOVEMBER, 2022. IT IS LIKELY TO MOVE WEST-NORTHWESTWARDS AND GRADUALLY CONCENTRATE INTO A DEPRESSION OVER CENTRAL PARTS OF SOUTH BAY OF BENGAL AROUND 18TH.

SCATTERED TO BROKEN LOW AND MEDIUM CLOUDS WITH EMBEDDED INTENSE TO VERY INTENSE CONVECTION LAY OVER EASTCENTRAL BAY OF BENGAL, SOUTH BAY OF BENGAL AND ANDAMAN SEA. SCATTERED LOW AND MEDIUM CLOUDS WITH EMBEDDED ISOLATED WEAK TO MODERATE CONVECTION LAY OVER NORTHEAST & WESTCENTRAL BAY OF BENGAL.

**PROBABILITY OF CYCLOGENESIS (FORMATION OF DEPRESSION) DURING NEXT 120 HRS:**

24 HOURS	24-48 HOURS	48-72 HOURS	72-96 HOURS	96-120 HOURS
NIL	NIL	LOW	MOD	MOD

**ARABIAN SEA:**

SCATTERED TO BROKEN LOW AND MEDIUM CLOUDS WITH EMBEDDED INTENSE TO VERY INTENSE CONVECTION LAY OVER CENTRAL ARABIAN SEA, SOUTH ARABIAN SEA, LAKSHADWEEP ISLANDS AREA & COMORIN AREA.

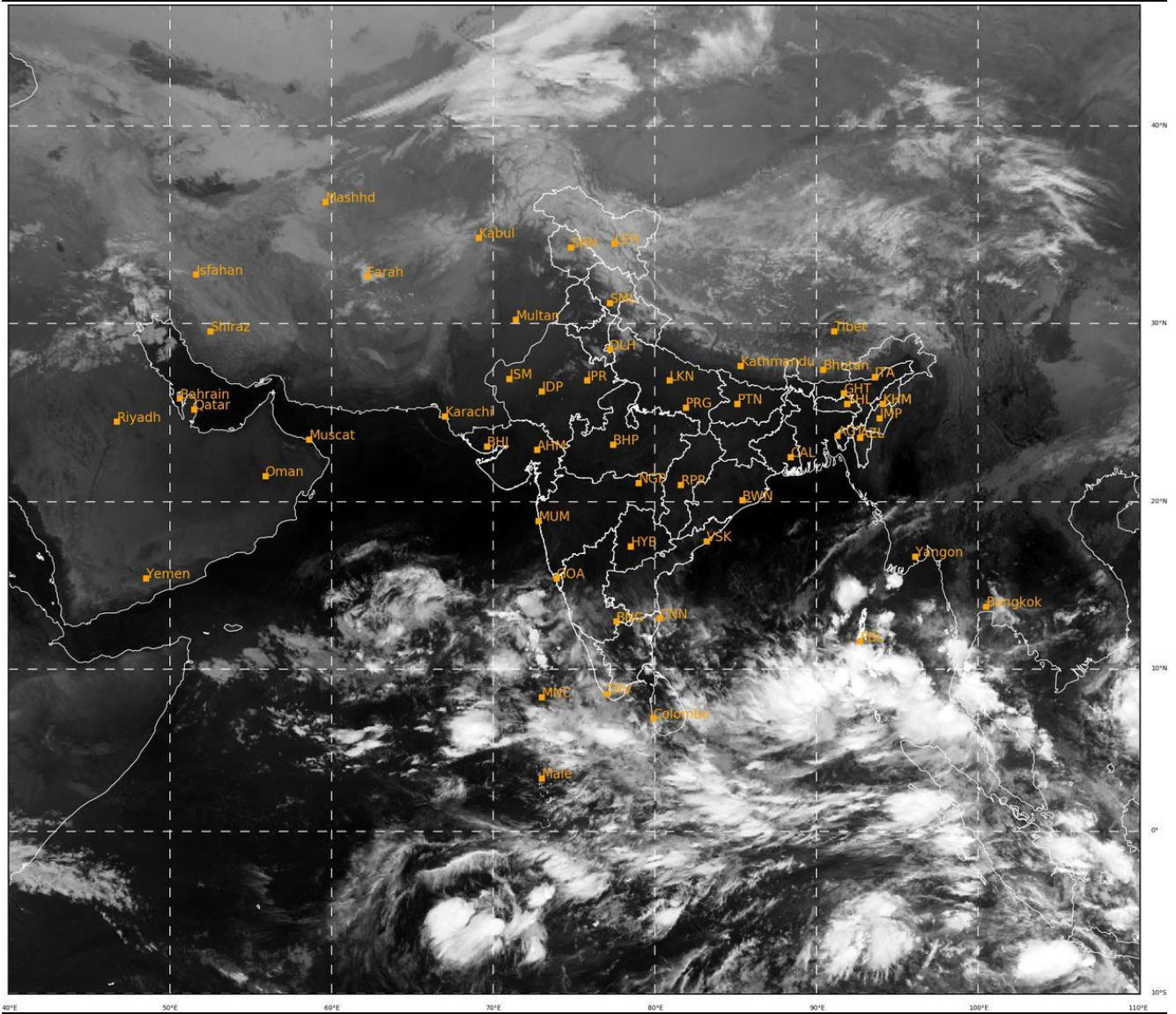
**PROBABILITY OF CYCLOGENESIS (FORMATION OF DEPRESSION) DURING NEXT 120 HRS:**

24 HOURS	24-48 HOURS	48-72 HOURS	72-96 HOURS	96-120 HOURS
NIL	NIL	NIL	NIL	NIL

**REMARKS:** NIL

SAT : INSAT-3D IMG  
 IMG\_TIR1 10.8 um  
 LIC Mercator

15-11-2022/(0300 to 0326) GMT  
 15-11-2022/(0830 to 0856) IST



510

944

IMD,DELHI

Cloud distribution: (a) Isolated: <25%, Scattered:25-50%, Broken: 51-75%, Solid:>75%, Convection Intensity: (a) Weak: Cloud Top Temperature (CTT) >-25°C, (b) Moderate: CTT: - 25°C to -40°C, (c) Intense: CTT: - 41°C to -70°C and (d) Very Intense: : Less than -70°C  
 PROBABILITY OF CYCLOGENESIS (FORMATION OF DEPRESSION): NIL: 0%, LOW: 1-33%, MODERATE: 34-66% AND HIGH: 67-100%  
 This is a guidance Bulletin for WMO/ESCAP Panel Member countries. Visit respective National websites for Country specific Bulletins